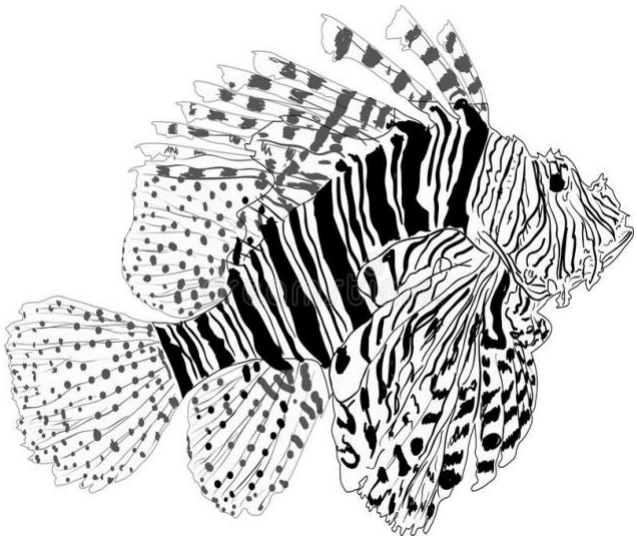
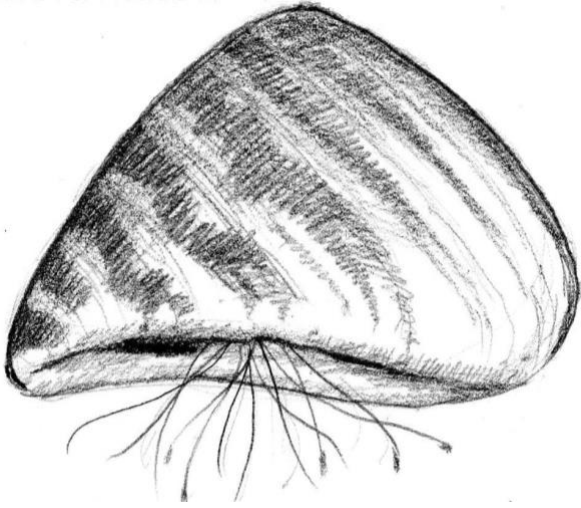
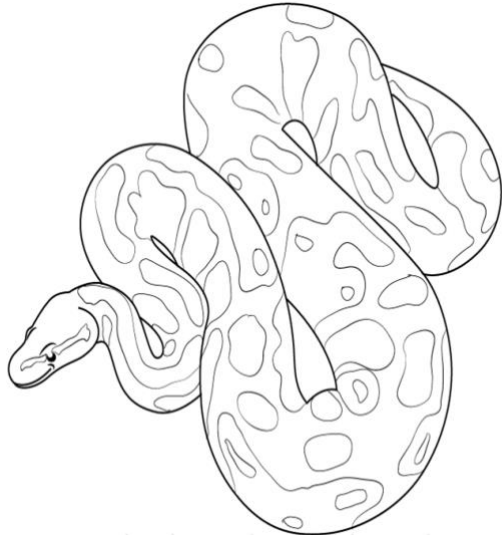


# REEF RELIEF

Color in the invasive species and fill in the blanks.

	<p>Name: Lionfish</p> <p>Native home: Indo-Pacific</p> <p>Where it has invaded: Florida Keys &amp; Caribbean</p> <p>Characteristics:</p> <ul style="list-style-type: none"><li>• Released either by accident after a hurricane or intentionally by a pet owner</li><li>• Has venomous spines</li><li>• Can live in very shallow and very deep waters.</li></ul>
	<p>Name: Zebra Mussel</p> <p>Native home: Russia and Ukraine</p> <p>Where it has invaded: Great Lakes &amp; Hudson River</p> <p>Characteristics:</p> <ul style="list-style-type: none"><li>• Believe it was introduced through shipping traffic</li><li>• Causes serious damage to boats and docks</li><li>• Has cost north American businesses \$5 billion</li><li>• Usually the size of a fingernail</li></ul>



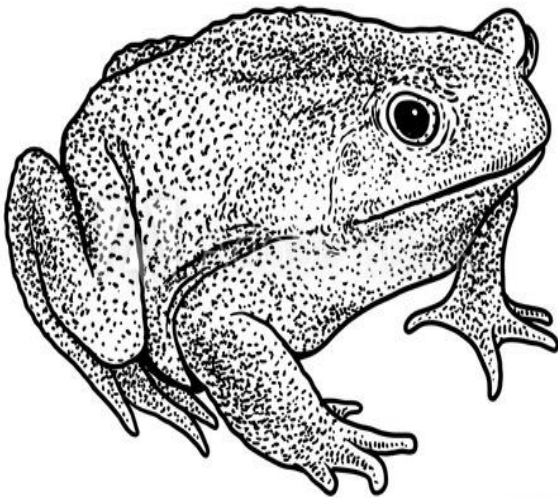
Name: Burmese Python

Native home: Southeast Asia

Where it has invaded: Everglades

Characteristics:

- Common pet, usually released when too big
- Have been found to eat alligators and other native species
- Can be longer than 20 feet
- Taken over the habitat for native animals



Name: Cane Toad

Native home: South America

Where it has invaded: Australia

Characteristics:

- Brought in by farmers hoping to control the beetle population.
- Has invaded multiple other areas
- Possess a toxin lethal to pets
- Lays many eggs



Name: Kudzu Vine

Native home: Asia

Where it has invaded: Southeast America

Characteristics:

- Brought in for decorative purposes and to control soil erosion
- Left unattended and invaded the areas
- Smothers other plants
- Vine can grow 1 foot per day



Name: Green Iguana

Native home: Central and South America

Where it has invaded: South Florida

Characteristics:

- Popular pet but gets released when too big
- Eats many native plants
- Causes damage to seawalls and infrastructure
- Can swim
-